

OMNIDIRECTIONAL ANTENNA

OUTDOOR MOUNTING

ANT868-Y12



Electrical characteristics

Bandwidth	860 - 870 MHz
Gain	11.5 dBi max
Impedance	50 Ω
Maximal power	10 W (50°C)
Antenna type	Yagi 6 elements

8 dBi antenna

Directive antenna

Shipped with a mast mounting kit

FME-M connector

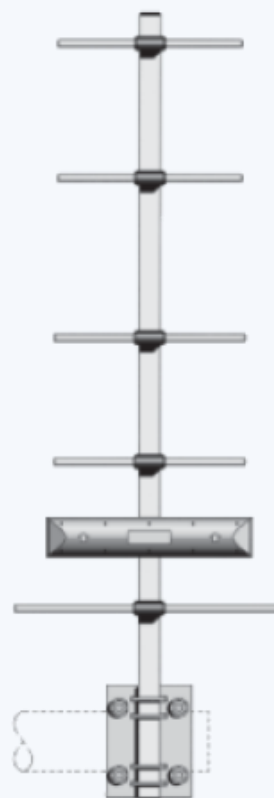
Vertical polarization

Mechanical characteristics

Dimensions	210 x 595 x 60 mm
Material	Aluminium, PCB, Thermoplastic
Diameter	70 mm
Weight	410 g
Wind force	180 km/h
Wind surface of exposure	0.02 m ²

About

Application	Outdoor
Certification	CE; FCC; RoHS



ATIM Radiocommunications
Chemin des Guillets
38250 Villard de Lans
France

www.atim.com
info@atim.com

