



ATIM will be closed from **August 15th to 19th, 2022.**

Have a nice vacation ! 🌞 🌴

Events - Meetings 📢

Meeting in Mauritius with our partner "Digital Twin Services"

[Etienne Raimbert](#) & [Francis Raimbert](#) met our partner [Digital Twin Services](#).

The Mauritian company is specialized in the implementation of IoT and AI solutions for verticals responding to the industrial 🏭, smart city 🏙️, smart building 🏢 energy efficiency ⚡ and smart agriculture 🌾 sectors.

Digital Twin Services is present in Mauritius, Reunion, Madagascar and South Africa.





[Stéphane Pouillot](#) and [Matthieu Delatour](#) came to meet you at the major international event of the ecosystem : [LoRa Alliance](#) 🚀.

We thank you for visiting us, we hope to see you again very soon! 🤝

Zoom on 🔍

Temperature & Humidity by external sensor

The **ACW-TCR** is equipped with a **temperature/humidity** sensor to ensure that the cold chain is respected.

Measurements are regularly transmitted via **Sigfox** or **LoRaWAN** networks and the configuration is done from the ATIM suite tools, locally or remotely.

Compatible with the computer and mobile versions of the IoT web platform, data visualization, remote sensor setup and alert configuration according to predefined thresholds are made possible in a few clicks.

- 🌡️ -40 °C to +125 °C
- 💧 0% RH to 100% RH
- 🔋 Replaceable batteries
- ⚙️ Configuration via USB, downlink or mobile app



[Documentation](#)



Transports of merchandise

- **Control** the storage conditions of the goods during transport and handling.
- **Guarantee** insurance coverage for damaged goods when the cold chain is maintained and proven.
- **Increase** food safety

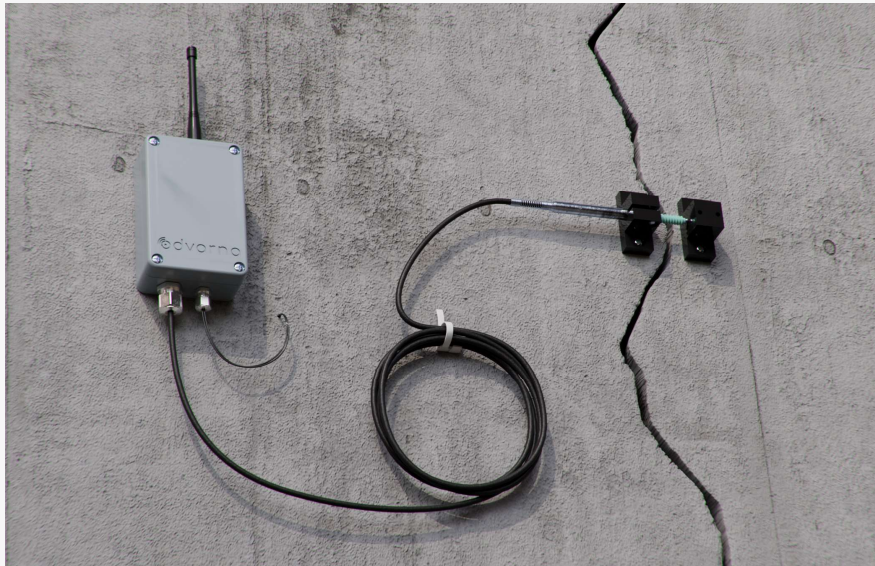


Crops

- **Monitor** temperature and humidity in greenhouses and farms.
 - **Prevent** the risk of frost in orchards, vineyards
 - **Coupling** to irrigation systems
- Sustainable agriculture

ADVARNIA use case

Structural monitoring of a building



Advarna facilitates **real-time crack monitoring** with [ATIM radio modules](#)

The **Obsessio_X6** module allows to perform remote crack monitoring on buildings, bridges, dams or other structures.

A temperature measurement of the concrete is also performed to correct the **thermal effects** of the crack.

Advarna offers a plug & play solution integrating the **ATIM IoT communication brick**: sensor configuration interface and dedicated visualization platform **InstrumME**.

[Documentation](#)

Digital catalogue

For more **flexibility** and quicker updating, we have opted for the digital format of our catalog version.



Available on our website, you can also access it via the QR opposite.
On your smartphones 📱



Solutions IoT

Your **partner** in **wireless** data **transmission**
ATIM offers you all the links of the **IoT** chain.

ATIM

Les guillets, 38250, Villard-de-Lans, France
+33 (0)4 76 95 50 65
contact@atim.com



This email was sent by to contact@atim.com
[View the web site](#) | [Unsubscribe](#)